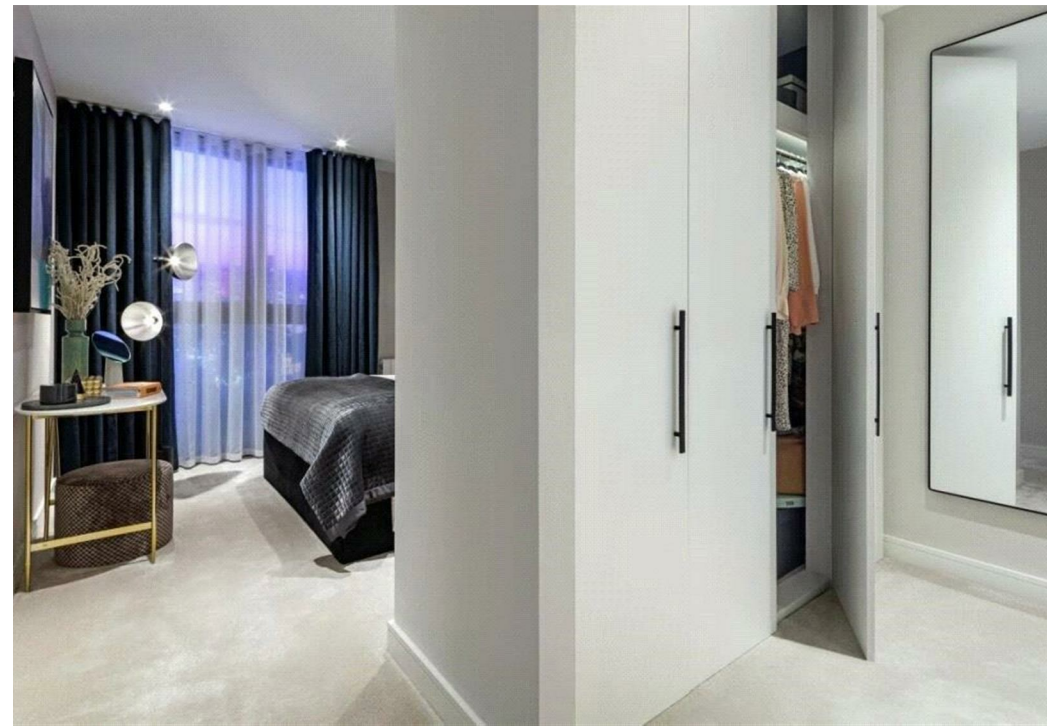


Slate Heights, 192 Slate Street, Castlefield, Manchester, Greater Manchester,
M15 4SZ
£300,000

ORLANDO REID
— MANCHESTER —



This stunning investment property presents a rare opportunity to own a slice of contemporary luxury in a prime central location. Situated in a new build development, this residence embodies the perfect fusion of modern design and convenience, making it an ideal choice for discerning investors.

This sleek and stylish apartment boasts a thoughtfully crafted layout, featuring two bedrooms and two bathrooms. With meticulous attention to detail, the interiors showcase high-end finishes, creating an inviting and comfortable atmosphere. Floor-to-ceiling windows flood the living spaces with natural light, providing panoramic views of the dynamic cityscape.

ORLANDO REID

MANCHESTER

St Johns Court 19b Quay Street, Manchester, M3 3HN
01616760099
manchester@orlandoreid.co.uk
<https://www.orlandoreid.co.uk/manchester/>

